

Milesight Image Quality Comparison

-Provided by Milesight Partner Saeed Alavi, Kankash Niroo Corporation

Overview

In this report, we will dig deep into three models of Milesight cameras in the aspect of image quality by comparing them under different lighting conditions.

Three camera models were tested on December 3rd, 2015, including:

- MS-C2962-FPB (under 1920×1080 resolution, 20fps, and 3072 Kbps)
- MS-C3366-FPNA (under 2048×1536 resolution, 20fps, and 3072 Kbps)
- MS-C4463-PB (under 2304×1296 resolution, 20fps, and 3072 Kbps)

MS-C3366-FPNA is Milesight's second generation product, while MS-C2962-FPB and MS-C4463-PB are the third generation ones. Moreover, MS-2962-FPB is a member of Milesight's new arrival Starlight Premium network cameras, utilizing Milesight's refined starlight premium technology, enhanced super WDR technology, and leading-edge H.265 compression.

Below is the test result preview showing how each camera did in (1) indoor with lights on, (2) indoor low light with WDR off, (3) indoor low light with WDR on, (4) indoor with WDR off, (5) indoor with WDR on, (6) indoor with lights on, (7) indoor low light, (8) indoor ultra low light, (9) outdoor night effect, (10) outdoor daytime effect.

MS-C2962-FPB

MS-C3366-FPNA

MS-C4463-PB

(1)



(2)



(3)



(4)



(5)

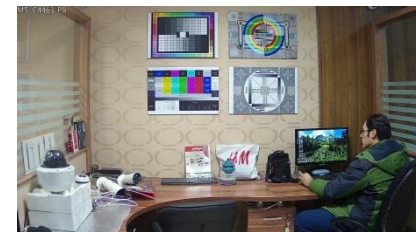
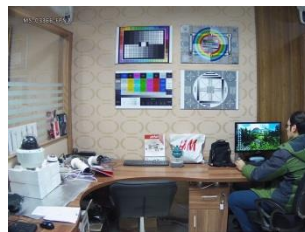


MS-C2962-FPB

MS-C3366-FPNA

MS-C4463-PB

(6)



(7)



(8)



(9)

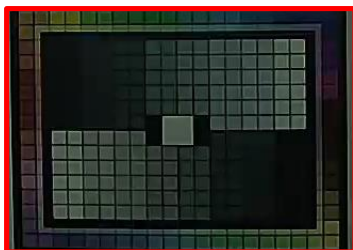


(10)

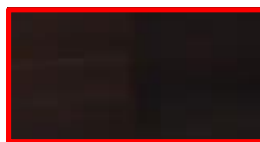


Indoor with Lights on

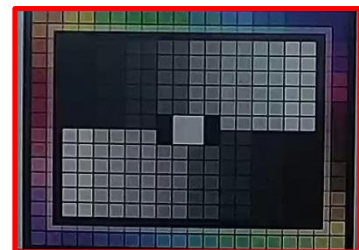
MS-C2962-FPB



MS-C3366-FPNA

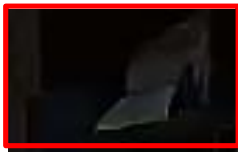


MS-C4463-PB

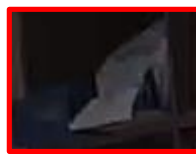


Indoor Low Light with WDR off

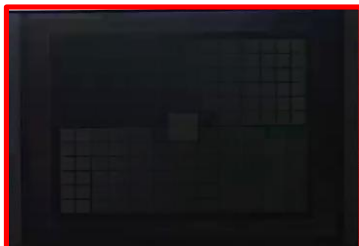
MS-C2962-FPB



MS-C3366-FPNA

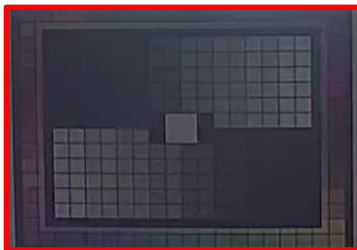
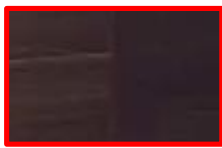


MS-C4463-PB

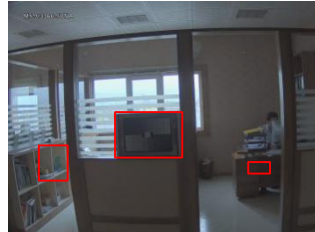


Indoor Low Light with WDR on

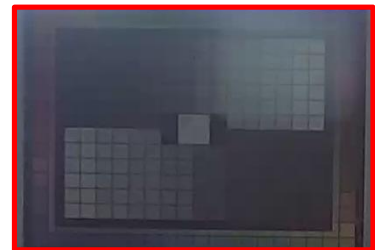
MS-C2962-FPB



MS-C3366-FPNA

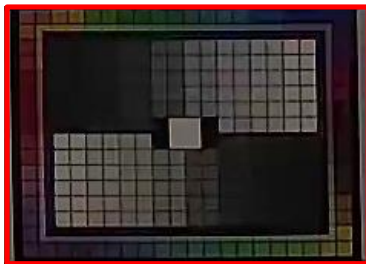
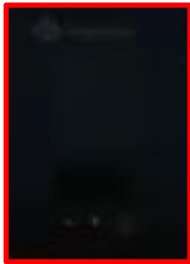
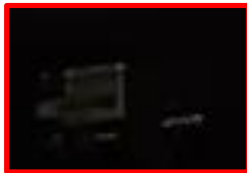


MS-C4463-PB

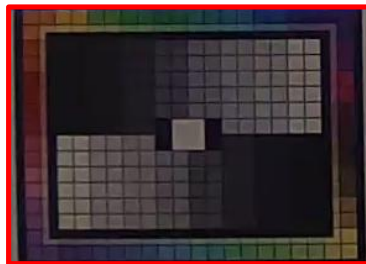
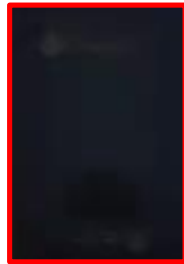
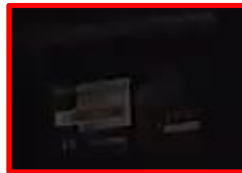
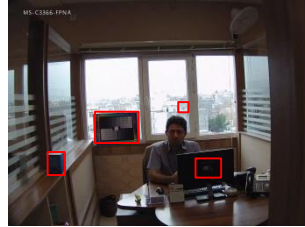


Indoor with WDR off

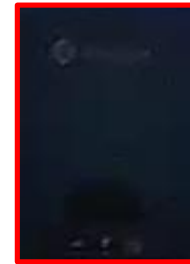
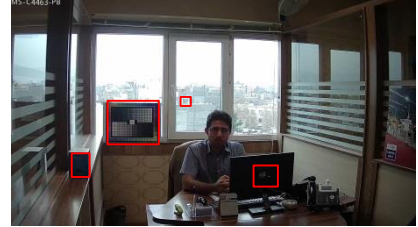
MS-C2962-FPB



MS-C3366-FPNA

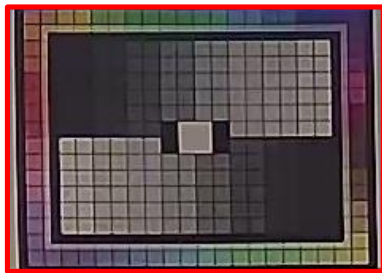
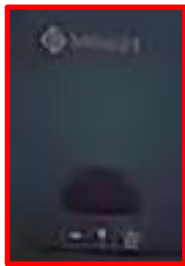


MS-C4463-PB

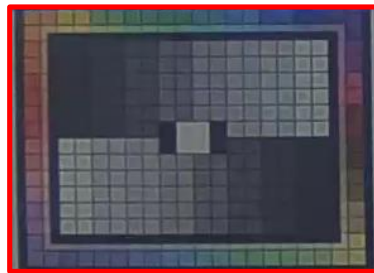
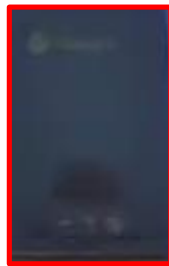
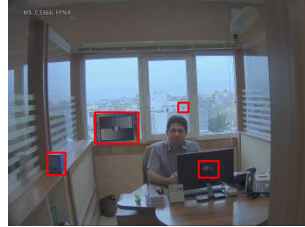


Indoor with WDR on

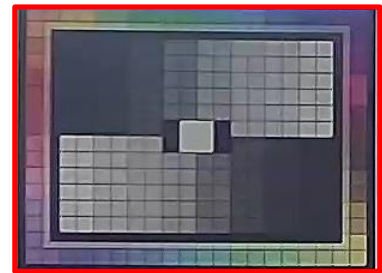
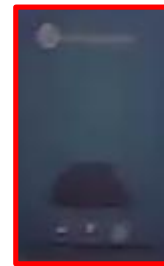
MS-C2962-FPB



MS-C3366-FPNA



MS-C4463-PB

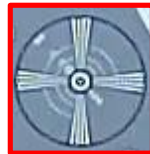
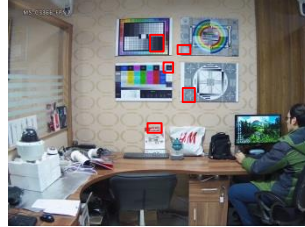


Indoor with Lights on

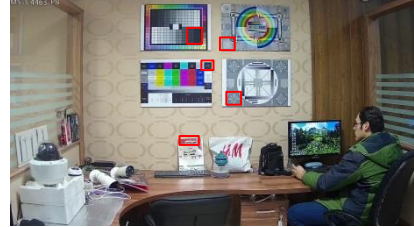
MS-C2962-FPB



MS-C3366-FPNA

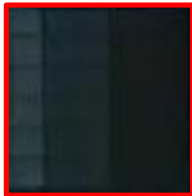
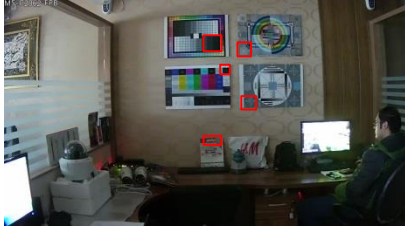


MS-C4463-PB



Indoor Low Light

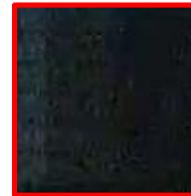
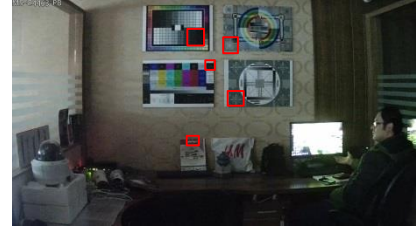
MS-C2962-FPB



MS-C3366-FPNA

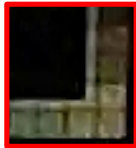


MS-C4463-PB

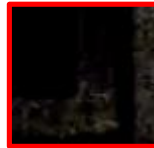
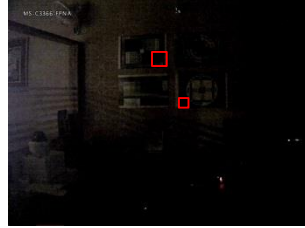


Indoor Ultra Low Light

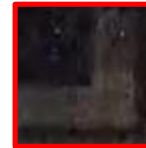
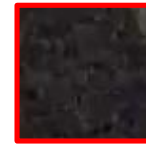
MS-C2962-FPB



MS-C3366-FPNA

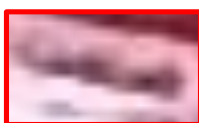
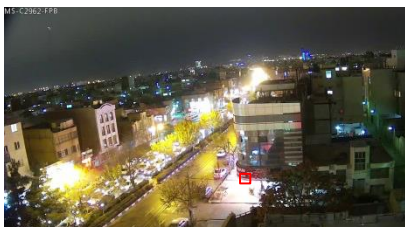


MS-C4463-PB

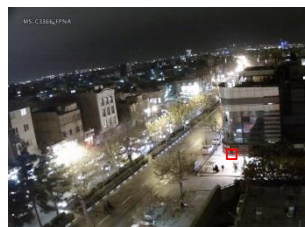


Outdoor Night Effect

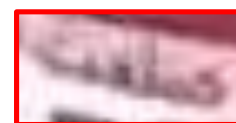
MS-C2962-FPB



MS-C3366-FPNA

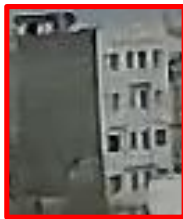


MS-C4463-PB

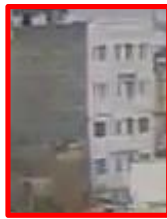


Outdoor Daytime Effect

MS-C2962-FPB



MS-C3366-FPNA



MS-C4463-PB



Provided by Milesight Partner Saeed Alavi, Kankash Niroo Corporation.

-END-